

Trace One Devex PLM

Bring remarkable
products to life



Creating products that consumers want and retailers need

Capturing opportunities for new product development demands agility, adaptability, and connectivity.

As a food and beverage manufacturer, you need to create innovative, compliant, cost-efficient products that consumers love — and you need to do it fast. Consumer preferences are always shifting, regulations are constantly changing, compliance varies from one country to the next, and global supply chain disruptions or resource constraints can hinder your work.

In spite of these challenges, your business depends on getting your products on the shelf quickly, at scale, with as little cost as possible.



The path to market has plenty of pitfalls. A PLM system helps you

From consumer trends to regulatory compliance to internal communication, food and beverage brands are responsible for balancing a wide variety of priorities in their quest to get products to market. Leveraging an integrated PLM platform to digitize the new product development and introduction (NPD) process helps you balance those factors and bring everyone in your organization on board.



steer clear

Time pressure demands agility

Rapidly changing consumer preferences demand a shorter innovation cycle. Companies need to innovate and update their products by leveraging and reusing existing formulation data. And time pressure is ever-present. The road from ideation to launch feels too long, and there's always the need to accelerate that cycle.

Brand risk is real

Protecting your brand's reputation is essential. Recalls due to non-compliance with regulatory requirements can erode consumer trust and damage your brand. Constant compliance assessments in the early stages of product development take time, but they're essential for keeping up with global regulation changes, protecting your reputation, and ultimately securing your bottom line.

Data can be overwhelming

In a world of advanced analytics, you can't afford to miss out on actionable insights. Manufacturers are feeling an increasing strain as they sift through a flood of data to find metrics that can improve performance and correct issues. Poor data management and metrics analysis have no place in modern manufacturing.

Cost overshadows everything

In the midst of consumer, retailer, and regulatory requirements, cost optimization is the key to staying competitive. Every time you intend to launch a new product, tweak a formulation, or substitute an ingredient, keeping costs down is a principal concern.

Teams are overloaded

Employees have a lot on their plates. That includes conflicting priorities from multiple vectors, numerous stakeholders, and resource constraints. They're looking for ways to offload tasks that don't add value. Teams also need a reliable working environment that boosts efficiency and minimizes errors.

Supply chains are unstable

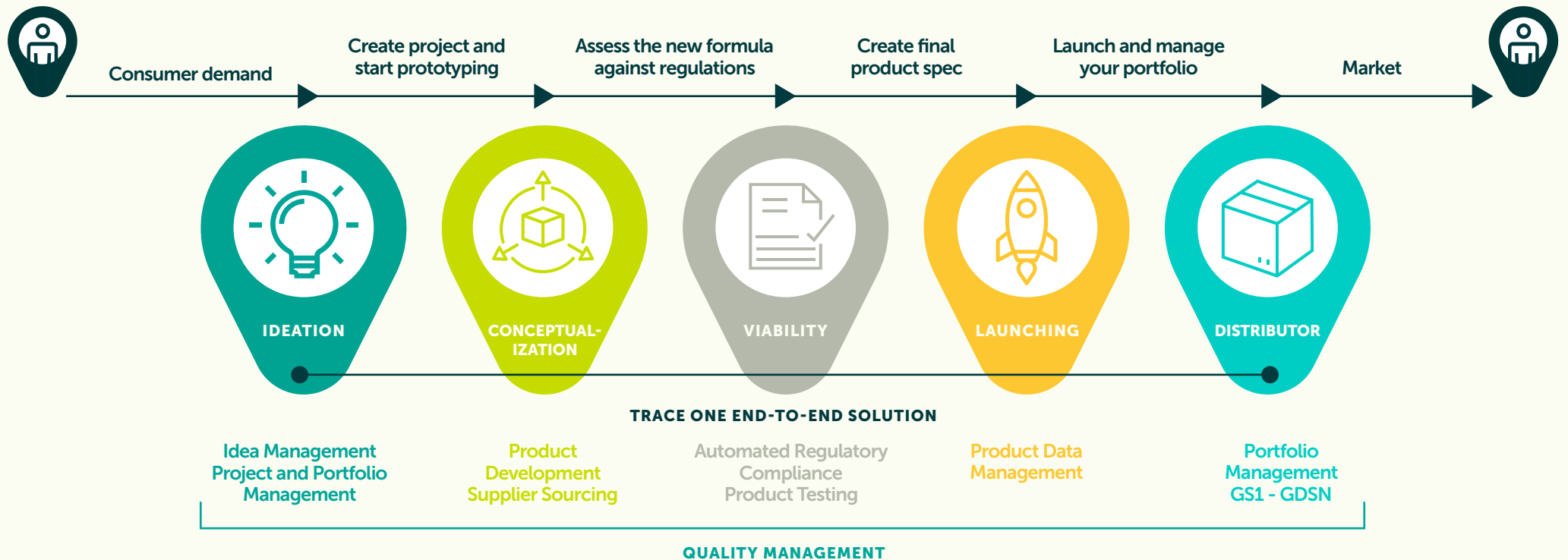
In an increasingly globalized world, supply chain transparency feels nearly impossible. Modern, multi-tiered supply chains might contain hundreds or thousands of suppliers that all contribute to a single product. Determining quality is becoming a real challenge. When the raw materials you rely on don't have the right quality and don't arrive on time — or at all — disruptions to your product flow lead to supply risks.

Trace One Devex PLM:

From idea to finished product, Trace One Devex PLM ensures compliance and facilitates innovation throughout the NPDI process.

Trace One Devex PLM is a single source of truth for process manufacturers. This integrated platform delivers traceability and visibility into your product lifecycle and expedites product go-to-market on a global scale.

- Get a holistic, 360° view over all aspects of the NPDI process.
- Enable unified, real-time communication across all stakeholders, from innovation and R&D through regulatory compliance, quality, and packaging.
- Standardize ideation, planning, product development, product data management, regulatory compliance, supplier, and quality management processes while enabling the flexibility your users need at the point of execution.



Trace One Devex PLM:



AI-powered features

Trace One leverages Artificial Intelligence (AI) to bring even more value to our solutions and take our PLM to the next level. AI-powered features enhance efficiency, accuracy, and agility throughout the product lifecycle.



Integrated regulatory compliance

Trace One's regulatory solution is embedded into our product lifecycle management platform to let you evaluate recipes and compare them against a harmonized database of regulations.



Workflow management

Establish helpful workflows with validation and approval processes tailored to your organization's specific requirements.



Industry expertise

Our experienced in-house implementation, customer success, and support teams ensure your solution adoption and ongoing usage stay on track.



Efficient change management

Trace One Devex PLM change management enforces control over formula, recipe, specification, and document revisions during all phases of the product lifecycle.



Data intelligence

Unlock legible information and actionable insights for data-driven decision-making with powerful, flexible dashboards, real-time performance metrics, and reporting tools.



Integration

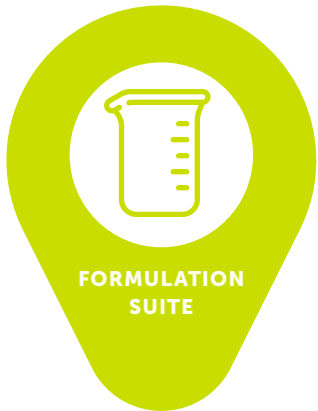
Smooth and flexible integration options for ERP and other enterprise systems mean you can get to work right away, without investing in awkwardly engineered connectors.



Ideation
Project & Portfolio management



Analysis & Optimization



Product development



Regulatory compliance & labeling



Ingredient, packaging, and
finished product management



Supplier relationship and
quality management



End-to-end quality management

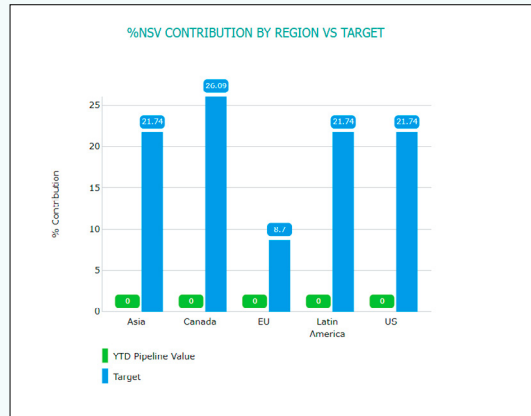


Test protocols and workflows

One platform, end-to-end NPDI

Trace One Devex PLM is a product lifecycle management platform with multiple modules, each supporting a critical aspect of the NPDI process.





NPDI requires a coordinated effort between many different business groups. Trace One Devex PLM's **Innovation Process Management Suite (IPMS)** equips process manufacturers with a comprehensive solution for managing cross-functional projects and product portfolios to drive innovative results.

IPMS incorporates Stage Gate technology to comprehensively manage projects at each phase of development. Workflows capture the necessary phases for large breakthrough projects, line extensions, fast-tracked efforts, cost-saving initiatives, maintenance, and product improvements.

Connecting the dots from ideation to implementation

KEY FEATURES

Idea management

Reduce the cost of innovation management by optimizing the ideation process with easy concept generation, classification, and scoring. Promote ideas based on what customers want, technical feasibility, and viability in the market.

Project and portfolio management

Manage tasks and timelines, analyze risks, and track progress. Benefit from precise investment planning and monitoring with portfolio management. Leverage multi-project reporting, financial tracking, and resource allocation. Through accurate and connected management tools, IPMS empowers you to align your corporate NPDI strategy with your portfolio.

Data analysis

Real-time dashboards help you manage complex product portfolios with the support of financial, resource, and scoring models alongside analysis and reporting features. The IPMS financial modeling tool has a fully automated profit-and-loss statement that doesn't just integrate your data. It continually updates that information as your project advances. Meanwhile, comprehensive metrics drive efficient decision-making and keep your portfolio consistent with your strategy to achieve the financial returns you want.

Analysis and optimization

Trace One Analytics takes advantage of our unified platform to break down walls between data silos and turn information into action.

Access dashboards to understand key business risks and opportunities, then action tasks based on priority and impact. Data filters help you conduct more intelligible analysis through flexible charting and dashboards for clear visualization. Automated notifications let you schedule report distribution via email to maintain consistent communication and data sharing across a variety of downloadable content formats, including Microsoft Excel and PDF.

KEY BENEFITS

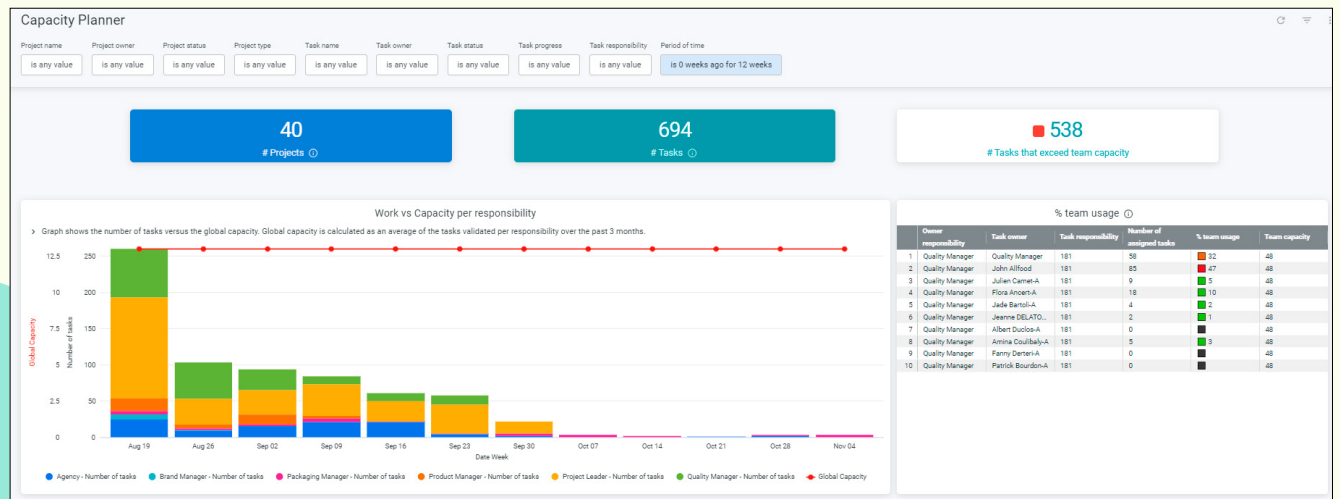
Adapt to market trends and regulation changes more quickly and cost-effectively

Serve consumers better and faster by quickly identifying and analyzing supplier, project, and product issues, process bottlenecks, and resource and capacity planning

Deliver sustainable growth, longevity, and profitability

Improve decision-making to plan more agile, accurate moves in the market

Reduce reporting overhead and keep stakeholders and key decision-makers informed and aligned





KEY FEATURES

Intuitive user interface

Clean, modern, and intuitive formula editor tools improve user experience and productivity, giving your team a hierarchical overview of recipes, formulas, and processes

Customized views

Create and maintain your own configured view, displaying only the information you need. You can also reorder your columns or rows for both the Component list and the Headers and Totals panel.

Enhanced formula comparison

Enable product developers to compare a series of formulas quickly and easily, visualizing differences between multiple formulas or different versions.

Nutritional limits tool

Review your ingredients in real-time, seeing how each contributes to the final product, including cost, nutritional values, and composition. You can also add or remove components and change quantity contributions with the click of a button. Finally, get instant notifications if you're out of limits so you can adjust your formulas accordingly.

Recipe template designer

Build and maintain all recipe templates using process stages from your library.

Requirements-driven formulation

Requirements-Driven Formulation is a new web-based module that enables you to collect, document, structure, trace, and prioritize product requirements. It also lets you launch real-time compliance checks against the product brief during the formulation process.

Convert formulas to recipes

Promote formulas to recipes using our Convert to Recipe tool. Select your predefined Recipe Template and allocate your ingredient quantities against different process stages. This feature provides visibility into the progress of your ingredient distribution, accelerating recipe creation.

Advanced formula search

Using the Advanced Formula Search quickly connects R&D users to the best-matching products or formulas. This easy-to-use interface allows users to apply necessary parameters and criteria to their search requests, improving the accuracy of their results.

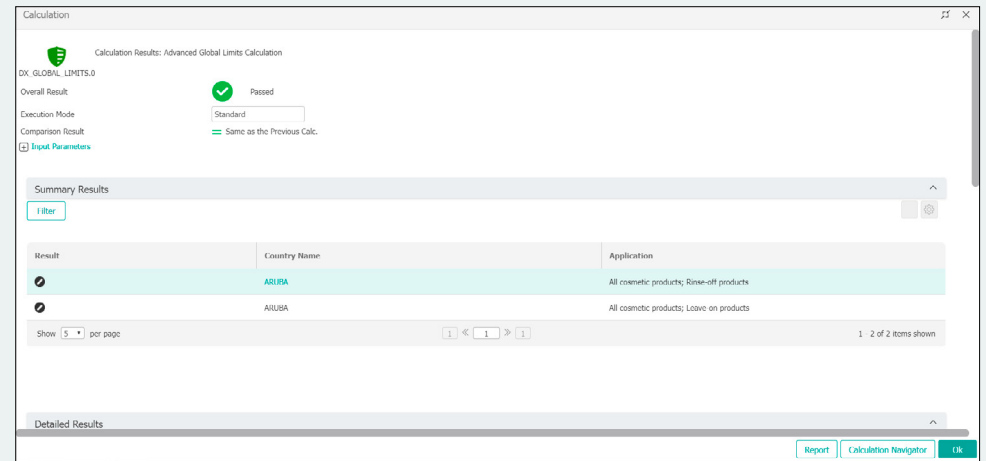
The Formulation Suite in Trace One Devex PLM is a web-based formulation tool that optimizes product development for recipes and packaging while accelerating formulation, ensuring compliance, and meeting strict product requirements.

Quick, clean, and compliant product formulation

#	Material Code	Description	UM	Group	Material Number	IS_QTY_CALC	Formula Measure	Quantity	To Makeup	Density	CP
1	URBP002	MELDER.1	Ng					27.000			
2	URBP002	MELDER.1	Ng					4.000			
3	URBP007	Milk Powder	Ng					20.000			
4	URBP003	MELDER.1	Ng					0.000			
5	URBP003	MELDER.1	Ng					0.250			
6	URBP003	MELDER.1	Ng					0.000			

Designing for compliance from the ground up

Trace One Devex PLM includes an integrated **Regulatory** solution. Support your users as they evaluate recipes and compare them against a harmonized database of regulations.



KEY FEATURES

Compliance checkpoints

Analyze and compare multiple countries, provide formula history to ensure traceability, and configure checks to run on multiple products at regular intervals, ensuring your formulas receive regular reviews.

Product labeling automation

Automate the product label creation process to drive traceability and visibility, ensuring consistent and accurate labeling processes. Trace One Devex PLM quickly compiles accurate ingredient statements, lists allergens, provides nutritional information, and helps you calculate values according to legislative requirements.

Global limits calculations

Quickly analyze multiple countries for rules around additives, contaminants, pesticides, and more. Give your regulatory teams and formulators the power to perform initial recipe screens, check for limits, access easily understood impact and compliance reports, and provide clear go/no-go compliance assessments.

Unified regulatory datasets and packages

Trace One Devex PLM's regulatory solution comes pre-installed with baseline calculations. Our regulatory framework can be further enhanced with data provided by our teams or yours. Trace One's data packages cover legislation sources reaching over 85 countries, including more than 400 vertical and horizontal guidelines along with 2 million restrictions.

EHS compliance and SDS authoring

Accelerate hazard classification and Safety Data Sheets authoring in all major markets, including the European Union, the United States, and China, using official regulatory data. Trace One provides a harmonized database of substance classifications and integrated regulatory content options.

Expert regulatory service and support

Trace One provides over 25 resources specific to regulatory affairs. Our regulatory professionals all have qualified scientific backgrounds, and our global team works in 14 different languages and is versed in regional guidelines and regulations.



From ingredients to packaging to finished product,

all in one place

Process-based manufacturing demands the most accurate and high-fidelity data throughout the product lifecycle to meet regulatory compliance and quality expectations. **Product Data Management (PDM)** serves as a central knowledge repository for process and product history between all users who interact with an item, including project managers, engineers, salespeople, purchasers, and quality assurance teams.

Trace One Devex PLM's PDM module handles three crucial areas.



Trace One Devex PLM offers multiple prebuilt ingredient data templates, so you can quickly install the ingredient management package that fits your products' complexities and compliance needs best. These data sets form the building blocks of ingredient and material master specifications and product formulations.

- Simplify data gathering and ingredient complexity.
- Easily manage data throughout an ingredient's lifecycle.
- Perform roll-up calculations for physical properties like moisture and density.
- Upload a Certificate of Analysis (CoA) and link test properties and methods to ingredient specifications so you can integrate them into your lab systems.

KEY BENEFITS

Create multiple raw materials for multiple plants from the same experimental ingredient.

Manage ingredients specific to sites and vendors by leveraging material masters.

Enable pre-selected approvers to lock ingredient data editing during review, add comments, ask for reworks, and more.

Easily build ingredient specs from templates.

Automatically activate approved ingredients for manufacturing.

Connect vendors and suppliers to ingredient materials and specifications.

PDM:

Ingredient management



PDM: Packaging management

Use the PDM packaging management feature to streamline the packaging process from creation to product activation. Out-of-the-box packaging data fields, approval workflows, supplier links, status changes, and specification templates help you navigate any kind of scenario, from basic to advanced.



KEY FEATURES

Use prebuilt packaging data templates to keep all your packaging information in one place, reducing rework and errors during data entry.

Standardize and reuse templates for different levels of packaging requirements and complexity.

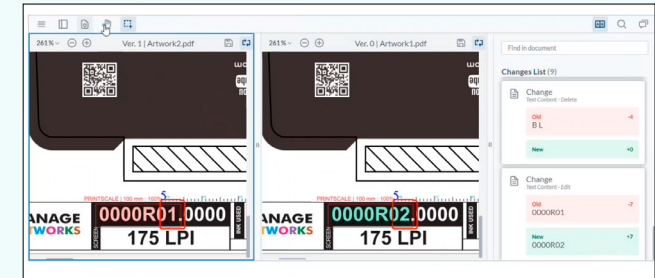
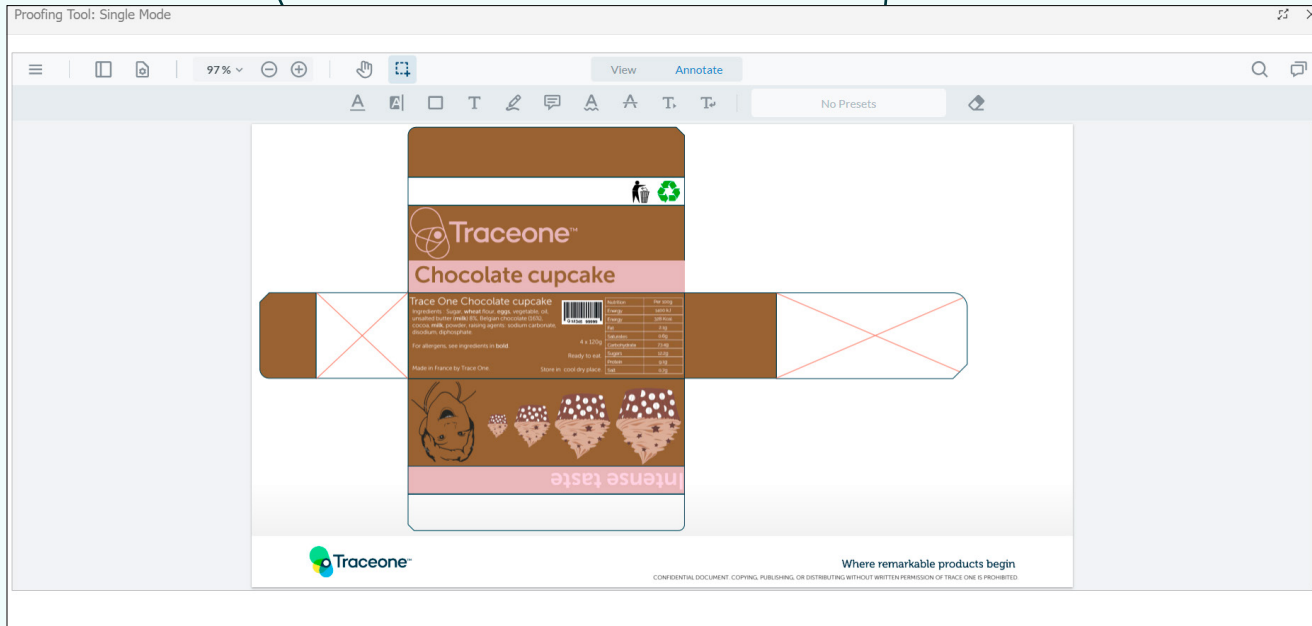
Control packaging data, track versions, facilitate status changes, add approvers, and implement other changes to the packaging material directly from its packaging specification.

Attach, annotate, and compare artwork for each packaging item.

Connect vendors and suppliers to ingredient materials and specifications.

Easily add physical properties like weight, unit of measure, volume, porosity, shipping and storage requirements, and more, all depending on your requirements.

Automatically send packaging data into your finished products and incorporate it into your formula calculation.



Maintaining quality standards across artwork pieces for packaging of various product ranges is challenging. This includes ensuring that the artwork is visually appealing, accurate, aligns with the brand's guidelines, and complies with different countries' legislation. Trace One Devex PLM's Artwork Proofing Tool enables our customers to centralize and organize artwork files, track revisions, and ensure that all artwork meets legal and branding requirements. The tool allows submitting, reviewing, comparing, and approving the artwork for the product packaging.

PDM:

Accurate product identity

KEY FEATURES

Comparison against previous versions

Annotations and comments

Artwork layers and text navigation

PDM:

Finished products management

Trace One Devex PLM gives you the power to create new finished products directly from approved formulas and packaging management data, creating a direct link to your BOMs. Any changes to a finished product's specification automatically synchronize with your materials and formulas, creating a closed-loop data management process across your products.

KEY BENEFITS

Link specifications to your finished product materials and synchronize all data fields, including BOMs, packaging information, and shipping information

Easily manage the finished product lifecycle with full approval traceability.

Drill down into product hierarchies and rely on Trace One Devex PLM to complete calculations.

Access technical data sheet reports with BOM sections, marketing and packaging data, technical data, and more.

Trace One Devex PLM takes PDM a step further by connecting your finished products to the labeling process. The result is a streamlined process for labeling assortments that combines multiple finished products and gives you the flexibility to link existing labels or select and combine products into one label.



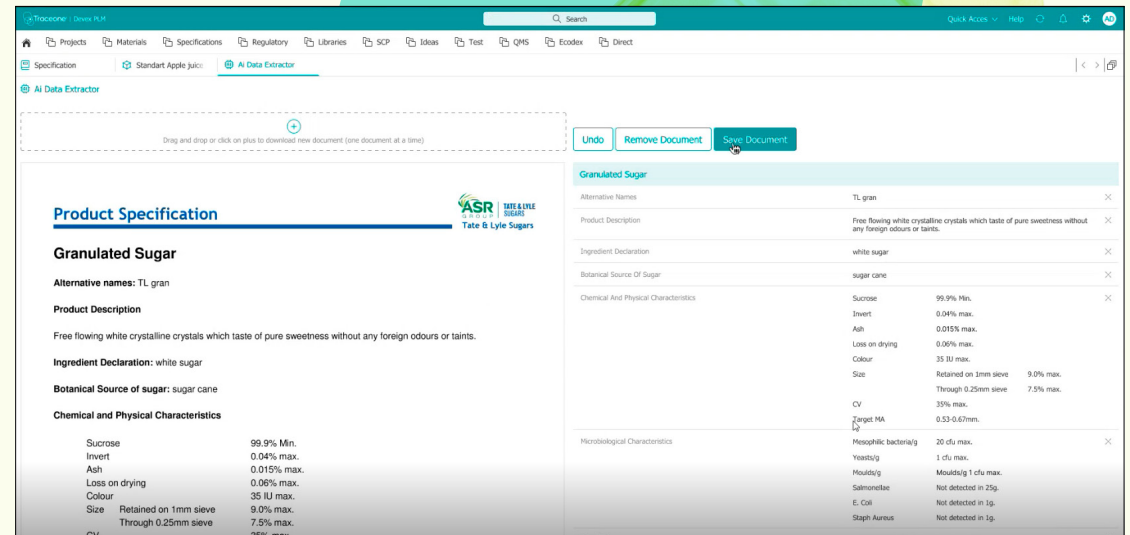
PDM: AI data extractor

Precise raw material data is key for ensuring product adherence to development requirements. Dealing with hundreds of product specifications from raw materials suppliers, product developers need to spend a significant amount of time entering materials' attributes in PLM manually with a high risk of making mistakes.

Trace One Devex PLM's new AI-powered feature, AI Data Extractor helps recognize and

extract necessary data from product specifications in PDF format to boost efficiency and reduce manual data entering.

Introduced AI technology can comprehend various document types and formats, continuously learning to adapt to evolving content patterns, and seamlessly mapping extracted data to existing system attributes for enhanced integration and analysis within the PLM system.



Product developers using AI Data Extractor will get the benefits of:

- **Efficiency:** the solution reduces time and effort required for manual extraction tasks.
- **Accuracy:** AI Data Extractor provides precise and consistent extraction compared to manual methods, minimizing errors.
- **Productivity:** it boosts overall productivity by streamlining extraction processes.
- **Data Accessibility:** the solution makes extracted information readily available within the PLM system for quick access and utilization.
- **Scalability:** it is adaptable to various document types and formats commonly encountered in PLM workflows.

Product excellence, right from the raw materials

KEY BENEFITS

Minimize process costs by streamlining communication with suppliers and reusing data.

Establish a worldwide raw material standardization channel to drive significant cost savings for globalized sourcing.

Harmonize and standardize specifications to achieve significant cost savings on the global stage.

Reduce errors to improve suppliers' data quality.

Enable informed decision-making for cost, quality, and performance optimization during product development.

Secure your company's intellectual property.

Achieve greater supply chain traceability and manage potential issues proactively.

Translate data from suppliers into usable formats while collating updates to your specifications data into an actionable, reportable format.

Trace One Devex PLM's **Supplier Collaboration Portal (SCP)** is a cloud-based, self-service tool that both suppliers and client organizations can use to facilitate and simplify the qualification, registration, and ongoing management of suppliers and vendors. The SCP gives you an overview of your entire network, streamlining supplier selection according to criteria you choose. Achieve traceability across your entire supply chain with a single repository of supplier collaboration data that's always up to date.

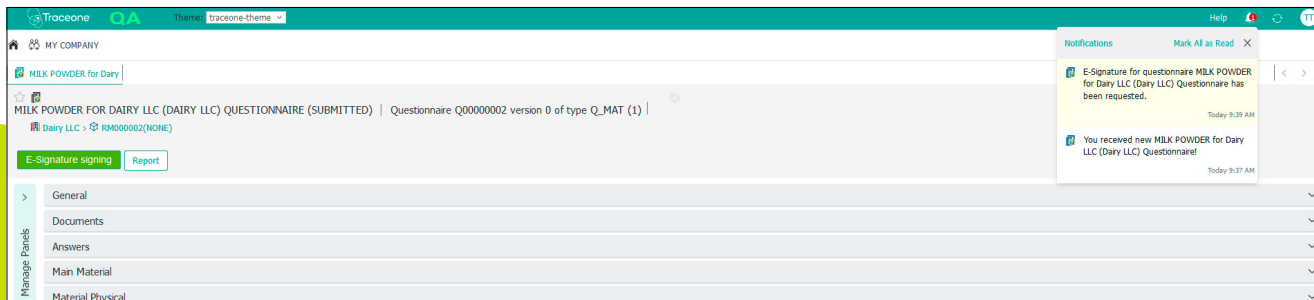
Useful analysis requires clean, accurate data from suppliers and vendors, extending across every material and process associated with each NPDI effort. The SCP lets you structure and standardize the supplier data you need and engage with your supply chain through customizable questionnaires and document uploads.

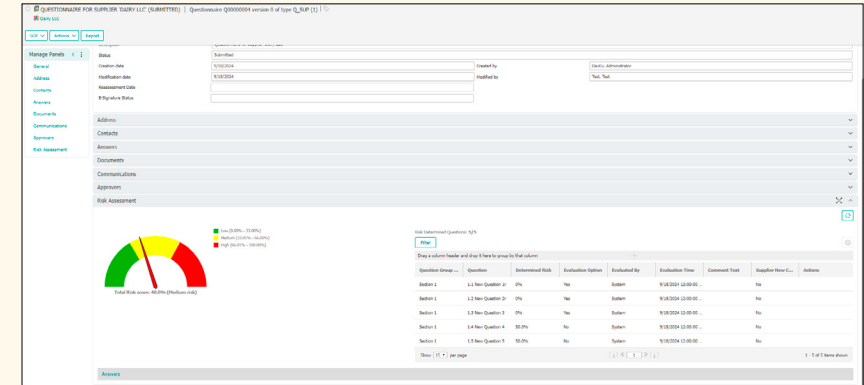


Secure agreements

Supplier Collaboration Portal now allows companies to control document exchange and information provided by suppliers with DocuSign integration.

- **Easily request the electronic signature** of the approved questionnaires inside the system and collect signed documents and certificates to ensure traceability and peace of mind.
- **Increase operational efficiency** and reduce the time needed to prepare, send and sign documents.
- **Get your collaboration with suppliers organized and controlled** with an intuitive and easy-to-use signing process.
- **DocuSign meets the most stringent global security certifications** and offers enterprise-grade security and compliance controls to protect information, documents, and data.





Trace One Devex PLM's **Quality Management module** integrates quality management across the entire product lifecycle, providing end-to-end visibility and timely, relevant, accurate supplier data for quality directors.

Ensure feedback reaches the right people at the right times so every team throughout your organization can focus on quality improvement before it gets lost in transmission or passed onto the next stage of production.

Key features cover the most vital quality areas:

- Supplier and material risk assessment
- Non-conformance (NC) management lifecycle and integrated root cause analysis
- Corrective action and preventive action (CAPA), supplier corrective action requests (SCARS)
- Quality management dashboards
- Customer complaints
- Geographic supplier mapping
- Audit management

KEY FUNCTIONS

- 1** Gain a holistic view over quality management by integrating quality management across a product's entire lifecycle, touching every functional area from R&D to the supply chain and customer engagement.
- 2** Design, build, and deliver quality from the outset. An integrated approach to quality management makes quality more than just a last-minute, "just fix it" concern. Instead, it's an opportunity to create better products.
- 3** Expand the scope of quality so it goes beyond simple regulatory and compliance requirements, helping achieve high-value goals like enhanced product quality, continuous business efficiency, and accelerated time-to-market.

Impeccable products.

Unshakeable trust

Tried and tested for markets that expect reliability

The **Product Test Management** tool standardizes and automates test protocols and workflows, helping you easily collect and evaluate data for the end-to-end testing process.

KEY FEATURES

Create testing plans you can customize to any product.

Customize your testing schedule by parameter to allow flexibility within one test protocol.

Compare results within particular test protocols.

Collect data easily in one centralized location.

Align testing dates to help you manage variable test schedules, making sample testing more efficient.

Automatically send packaging data into your finished products and incorporate it into your formula calculation.

Receive direct notifications and access a dashboard overview for test schedule tracking.

Get seamless notifications direct to your email through a dashboard view that notifies users of past-due, due, and upcoming tests.

Quickly identify outlier results based on your users' definitions.



Deployment and integration options made to match your needs

We prioritize simplicity and flexibility to ensure deploying and using Trace One Devex PLM adapts to your individual IT needs and the ways you work.

DEPLOYMENT SCENARIOS



Installed on top of your existing architecture

If you have sophisticated systems and infrastructure or you need total control over your own data centers, Trace One experts will facilitate an on-premises setup while supporting you with best practices.



Hosted and managed on our secure AWS infrastructure

Trace One manages this no-fuss, low-cost solution completely while maintaining top-shelf security through segregated customer data and encryption.



Installed on your own private infrastructure on Microsoft Azure or AWS

Combine the flexibility of on-premises deployment and the security of the cloud. With the private cloud, you choose the managed services you need, from complete server installation and configuration to light-touch support.

Your PLM solution needs to work with your ERP system and other enterprise applications to give you a complete picture of your business processes. To ensure full bidirectional information exchange between Trace One Devex PLM and your ERP system, we offer an Enterprise SOA connector for on-premises deployments and a WebAPI connector for the cloud.

By connecting and translating data formats between systems, Trace One Devex PLM helps R&D departments make more accurate decisions around material, trial, and production costs during product discovery, while reducing manual data entry and errors.

Beyond ERP systems, Trace One Devex PLM has the flexibility and tools to integrate with a range of applications, all depending on your business needs. Those include procurement systems that manage suppliers and other relationships like CRM, LIMS, and PIM. Drive business efficiency by connecting these systems with the Trace One Devex PLM environment for visibility and automatic information exchange.

Capture the connectivity, adaptability, and agility you need to compete in the global market

Trace One Devex PLM is your single source of truth (SSOT) across all aspects of the product lifecycle, delivered through an innovative, integrated platform.

- **Accelerated innovation, faster launches**
Reduce time to market by harmonizing and integrating the end-to-end product development process as you enhance cross-functional collaboration and knowledge sharing. That close connection helps you develop and manage new product introductions and change requirements efficiently.
- **A connected product value chain**
Manage and measure every aspect of the product lifecycle. With Trace One Devex PLM as your SSOT, you can optimize business processes and harmonize your systems to secure NPDI excellence and compliance for products and suppliers.
- **A fully integrated solution**
Streamline business processes throughout your enterprise by automatically integrating Trace One Devex PLM with your ERP and other enterprise systems and applications across ingredients, packaging, formulas, and finished products.
- **Available on mobile**
With our mobile web application you can easily check and approve your projects, specifications and materials using your mobile phone – staying connected while on the go. It's intuitive to use and best for business continuity and employee flexibility.
- **Ready for Industry 4.0**
Harmonize your data so you're ready to implement the latest technology advantages, including artificial intelligence, machine learning, and IoT.



Interested in learning more?

[Book a guided demo today](#)

Trace One is a premier SaaS provider of Product Lifecycle Management (PLM) and compliance solutions, specializing in the food & beverage, cosmetics, personal care, and chemical industries. With over 30 years of expertise, we empower more than 9,000 brand owners worldwide to innovate, collaborate, and bring products to market faster while ensuring the highest standards of quality, compliance, and sustainability. Trusted by industry leaders, Trace One combines cutting-edge technology with unmatched expertise to help businesses navigate complexity, accelerate growth, and shape a sustainable future.

For more information, visit
traceone.com

 [Company/trace-one](https://www.linkedin.com/company/trace-one)  <https://www.youtube.com/@TraceOne>

PARIS • NEW YORK • MILAN • SHANGHAI • MELBOURNE • CHENNAI • WIESBADEN • KYIV • BELGRADE

Our powerful global community

